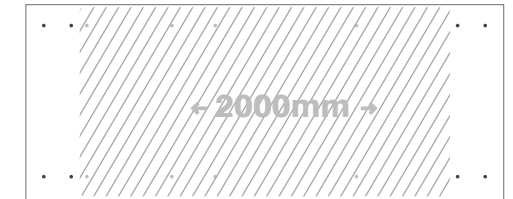
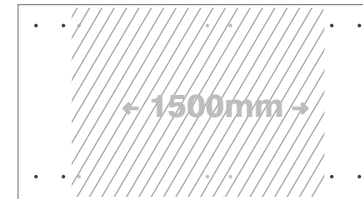


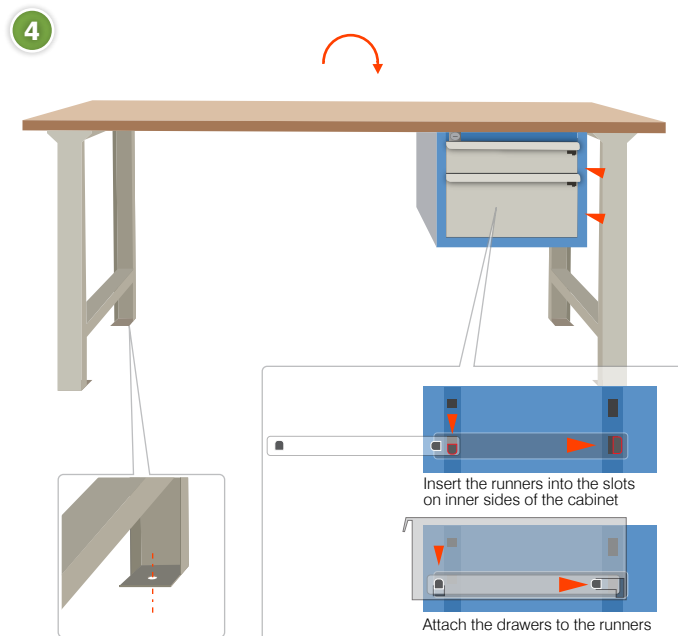
Positions for frames(legs)



Positions for suspended drawer



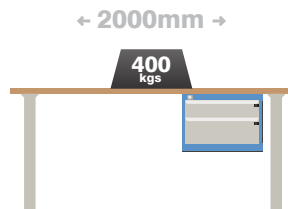
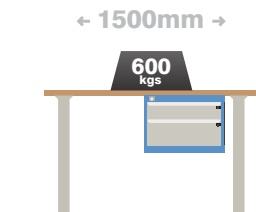
Economy suspended drawer cabinet can be attached to the worktop anywhere between the frames



*Fix-to-floor ready

Loading capacities

Workbenches



Drawers



1. Place the worktop on the floor, the fitting side up.

2. Attach the frames (legs) to the worktop using M10 bolts with washers, tighten with 17mm spanner.

3. Take the drawers out of the drawer cabinet and place it on top of the worktop (upside down) - find suitable position and mark to pre-drill the screw holes or attach the cabinet directly with included screws using a drill with 5mm Allen bit.

4. Turn the assembled workbench on its feet and insert the drawers back into the cabinet.

**the workbench can be fixed to the floor*

Tools Required

17mm Spanner, Drill with 5mm allen bit

Safety Precaution

Two competent people wearing **safety gloves**, **safety shoes** and **protective eyewear** are recommended to undertake the assembly.



scan for more info